

Inside:

- 2** Mentoring Award Winners
- 3** Half Dome Fitness Program
- 3** Professor's Unique "Thank You"
- 4** Academic Affairs Directory
- 6** FYI
- 8** Calendar

Cal State Northridge Posts Best Year Ever for Fundraising

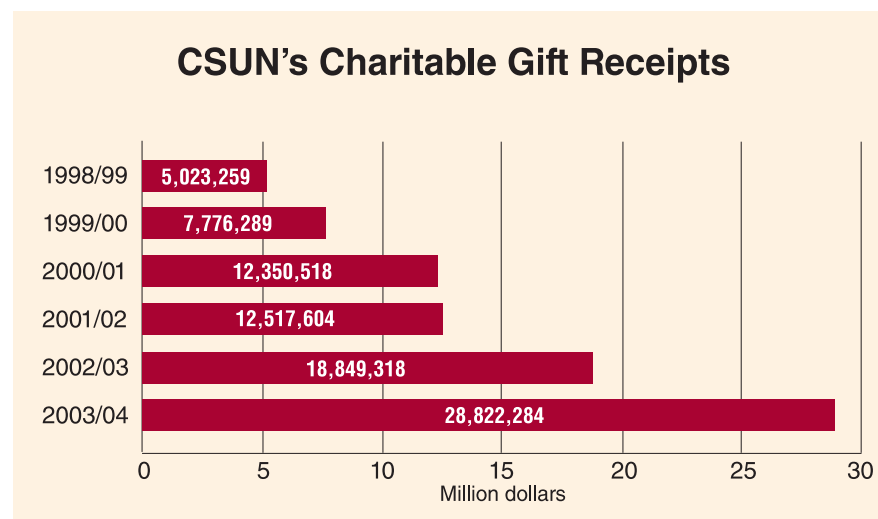
\$28.8 Million in 2003–04 Ranks CSUN Among Cal State's Best Fundraising Campuses

Cal State Northridge posted its best year ever for fundraising in fiscal 2003–04 by generating \$28.8 million in private support, the fifth consecutive yearly increase and enough to rank the university among the most successful fundraising campuses in the California State University system.

The \$28.8 million of charitable gift receipts from alumni, parents, supporters, foundations, corporations and CSUN employees represented a 53 percent increase over the \$18.8 million raised in 2002–03. Based on the 2003–04 results, Cal State Northridge has become one of the most successful fundraisers among the 23 Cal State campuses.

"I want to thank our donors, our faculty and staff, and everyone else who has contributed to this outstanding result for Cal State Northridge," said CSUN President Jolene Koester. "Our community increasingly has recognized that support for Cal State Northridge is an investment that helps produce value for our students, the region's economy and our quality of life."

Leading the contributions to CSUN for 2003–04 was \$15 million in Chinese antiquities given by Chinese-American entrepreneur Roland Tseng. That represented the second-year installment of a four-year, \$38 million pledge to the university announced by Tseng in September 2003. The total pledge remains the largest ever among all campuses in the Cal State system.



Judy C. Knudson, CSUN's vice president for university advancement, said the 2003–04 results reflect a broadening of support for the university. Apart from the Tseng gift, the campus' fundraising total included \$6.6 million from corporations, \$3.8 million from foundations and more than \$791,000 from alumni, the latter amount up 54 percent from the prior year.

"The private support we receive from the community gives Cal State Northridge the ability to maintain a margin of excellence beyond what state tax dollars can support," Knudson said. "With private support, we can offer unique and specialized educational programs, give our students access to state-of-the-art equipment

and help support their studies through special scholarships."

CSUN's fundraising results for 2003–04 were part of a broader, system-wide fundraising report presented to the California State University Board of Trustees last week. The report shows CSUN fundraising increasing to \$7.8 million in 1999–2000, \$12.3 million in 2000–01, \$12.5 million in 2001–02, \$18.8 million in 2002–03, and most recently to \$28.8 million for 2003–04.

In other indicators of the campus' success, the value of Cal State Northridge's endowments, investments that help support the operation of the university, increased 22 percent during 2003–04 to \$36.8 million, a \$6.7 million gain.

For the same year, Cal State Northridge recorded nearly \$76.2 million in revenues from grants and contracts. That included \$48.3 million from federal sources, \$17.7 million from state and local government sources and \$10.2 million from non-government sources. For the year, CSUN's total in grants and contracts revenue ranked fourth in the 23-campus CSU system.

After arriving at Cal State Northridge in July 2000, President Koester identified fundraising as one of her top four priorities for the university. The other priorities included strengthening the university's connections with its community, making the campus more user-friendly and improving student graduation rates.

Knudson, who heads CSUN's fundraising efforts, noted that the university's success in recent years is even more remarkable because it came during a time when a weak national economy and international instability led to modest nationwide declines in charitable giving to education.

In the coming years, much of Cal State Northridge's fundraising energy will focus on support for the 1,600-seat Valley Performing Arts Center project planned for the CSUN campus. That project, envisioned as a partnership with the community, is forecast to cost about \$100 million, including about half in expected state funds and half in private support. ■

Chancellor, President Assess CSU System's Impact on State

Northridge, CSU Give Value for Each Invested Dollar, Say Chancellor Reed and President Koester

CSU Chancellor Charles B. Reed and President Jolene Koester recently co-authored a Daily News opinion article on the CSU's economic impact on the state.

Sometimes, being familiar with something often means it gets taken for granted. We often undervalue what we think we know well. Take, for example, the California State University system and its 23 campuses, one of which is Cal State Northridge.

Few people really know what a CSU campus means to a community. They pass by it on their way to work, their children may go to classes there, they know a couple of alums, or they may have attended a sporting event or a concert. But when it comes to the extensive economic, cultural and intellectual worth of the university, most people have little idea of the substantial impact a university has on

a community and the state.

Using data from 2002–03, an independent firm (ICF Consulting of San Francisco) recently conducted an impact study of the California State University and found that the CSU and its 23 campuses have a dramatic impact on California. In pure economic terms, for every dollar the state invests in the California State University, CSU-related expenditures generate \$4.41 in spending. This translates to \$13.6 billion annually in economic activity, compared with state support of \$3.09 billion.

With the enhanced earnings of the CSU's 1.7 million graduates factored in, the total annual economic impact of CSU expenditures generates a \$53 billion spending impact on the state, or an annual return of \$17 for each dollar the state invests. The CSU in effect pays for itself.

Locally, a study conducted for California State University, Northridge similarly found that more than \$4 is generated for every \$1 the state invests in the campus. From the state's invest-

ment of about \$164 million, Northridge's impact on the Los Angeles economy is estimated at up to \$686 million.

Altogether, the university spends about \$100 million annually. CSU's Impact continued on page 2.

California State University
Northridge

18111 Nordhoff Street, Northridge, California 91330

Nonprofit Org.
U.S. Postage
PAID
California State
University
Northridge

Compact with CSU Secure in Governor's Proposed Budget

Campuses to Get Enrollment Funding, Compensation Increase, Student Financial Aid

Honoring the higher education compact with the CSU, Governor Arnold Schwarzenegger has proposed \$211.7 million in new revenue for the California State University's 2005–06 budget, which represents a 4.4 percent increase in CSU General Fund support. If approved, the proposed budget increase would provide state General Fund revenue of about \$2.6 billion for the CSU.

The budget would provide a 2.5 percent increase—or \$63.7 million—for enrollment growth to serve an additional 10,000 students (8,103 full-time equivalent students) in 2005–06.

"We are encouraged by the support the CSU is receiving from the governor in this budget cycle," said CSU Chancellor Charles B. Reed. In addition to funding for enrollment growth, he said, the budget enables the CSU to continue producing job-ready graduates for a wide range of California industries.

CSUN President Jolene Koester said the proposed budget affirms the multi-year funding compact the governor reached last year with the CSU system. "We look forward to the state Legislature likewise showing its support for public higher education in California," she added.

"The governor's funding proposal should enable Cal State Northridge in the year ahead to serve the increasing numbers of students who want to enroll here, while also preserving the first-rate quality of a Cal State Northridge education," Koester said.

Included in the proposed budget is a July 1 general operations increase that will provide \$88.1 million to support a 3.5 percent compensation increase pool for faculty and staff, with specific increases subject to collective bargaining. The budget also will funnel \$23.3 million into financial aid, bringing the grant funding level up to \$232.6 million for more than

100,000 state grants.

Based on the compact, the CSU would receive \$101.2 million generated by a student fee increase effective in fall 2005. The 8 percent fee increase for full-time undergraduates and teacher credential candidates will amount to an extra \$186 annually for undergraduates and an extra \$216 for credential candidates. Graduate students' fees will climb by 10 percent per year, or \$282.

Under this budget, undergraduates in 2005–06 will pay \$2,520 in state university fees annually, credential candidates will pay \$2,922 and graduate students will pay \$3,102 annually, not including campus-based fees.

Even with the increase, CSU officials noted, CSU fees remain among the nation's lowest.

During the past three years, the CSU has seen a net budget reduction of \$522 million that has resulted in enrollment reductions, cuts in student

services, and an inability to make progress on a growing faculty and staff salary gap. Compact funding provided in the proposed budget begins to restore student access, employee compensation, and mandatory costs for health and dental benefits, new space, and increasing insurance and energy costs.

A six-year agreement from 2005–06 through 2010–11, the higher education compact promises to fund at least a 2.5 percent annual enrollment growth, allowing the CSU to stem enrollment decreases experienced in 2004–05. It also provides a 3 percent minimum general fund increase in 2005–06 and 2006–07, and a 4 percent minimum increase in 2007–08 through 2010–11 for basic needs, including salary increases, health benefits, maintenance and inflation. For 2008–09 through 2010–11, the compact provides an additional 1 percent for core academic needs. ■

2003–2004 Excellence in Mentoring Award Winners Named

Merril Simon, Shelly Thompson Honored by EOP's Faculty Mentor Program for Work with Students, Faculty

Winners of the 2003–2004 Don Dorsey Excellence in Mentoring Award are assistant professor of educational psychology and counseling Merrill Simon and Shelly Thompson, director of Student Services Center/EOP in the College of Humanities.

Presented by the Educational Opportunity Program's Faculty Mentor Program, the annual awards recognize faculty and staff whose contributions to student mentoring are considered exceptional.

Simon advises and coordinates the College Counseling/Student Services option of the M.S. in counseling, and has coordinated the University 100 mentoring program for four years. Engaged in research on retaining CSUN's high potential urban students and effecting their matriculation at higher rates, Simon also has advocated with legislators for increased counseling



Merril Simon

services for under-served children.

"Mentoring is an extension of who I am personally," said Simon, who works with Student Affairs to facilitate



Shelly Thompson

a graduate intern program benefiting both graduate counseling students and the undergraduates they serve.

Together with Associate Dean

Arlinda Eaton of the Michael D. Eisner College of Education, Simon developed mentoring workshops to help first year faculty members become successfully immersed in the world of academia.

A CSUN alumna known to co-workers and students as the "go to" person, Shelly Thompson helps provide advising to College of Humanities students and support services for EOP students. She has become a strong advocate for the needs of CSUN students through her service on numerous university committees.

"I have been on the receiving end of mentoring so many times during my 18 years on campus," said Thompson. "Frankly, mentoring is contagious. It is infused throughout our work in EOP."

Established in 1998, the awards are named after educational psychology professor Don Dorsey, who helped develop CSUN's first mentor training program. ■

CSU's Impact...

continued from page 1.

\$334 million annually in Los Angeles County. This spending adds about 6,000 jobs to the community in addition to CSUN's own 5,800 employees.

Both the CSU system and Cal State Northridge increase the economic power of the state and its citizens by increasing the knowledge base. The CSU system provides the majority of the skilled professional labor that is critical to the state's knowledge-based industries such as agriculture, engineering, business, teacher education, technology, media, and computer science.

Quite simply, what both studies indicate is that the state must continue to invest in California's public higher educational systems as an investment in California's future.

Looking beyond the economics, CSU campuses are leaders in expanding the reach of higher education by serving the state's increasingly diverse population. More than half of all undergraduate degrees granted to Latino, African American and Native American students in California were awarded by the CSU in 2002–03. The CSU is the nation's most diverse university, with 53 percent ethnic minority students, twice the national average for four-year public universities.

Cal State Northridge is a national leader in the number of students who go on to earn doctorates in science and engineering and in social sciences and psychology. Northridge is among the nation's leaders in awarding bachelor's degrees to minority students and hosts one of the largest deaf and

hearing-impaired student populations in the country.

In addition, CSU campuses work every day to improve local communities and residents' quality of life. CSU students contribute nearly 30 million hours a year to community service activities ranging from preschool reading programs to public art preservation to health education and literacy projects. At Northridge, more than 700 students participated in courses with a service-learning component, using their expertise and training to help countless members of the community.

CSU campuses also are the place for sporting events, public lecture series, art exhibitions, library and museum resources, music, film, and theatre productions, all of which contribute significantly to the cultural

life of a community. Each year, 3.1 million visitors and tourists flock to CSU campuses to attend events. At Northridge, more than 74,000 attended cultural events, and since 1980, the university's art galleries have hosted more than 500 exhibitions and brought more than 25,000 visitors to campus annually.

California's public universities are appreciated but taken for granted by the public. As these reports show, the California State University and its 23 campuses make an enormous impact on all the state's residents in one way or another. The future of the state depends on the educated people who either work at or come from a CSU campus. When a state's higher educational system flourishes, everyone wins. ■

'Half Dome and You' Fitness Program Is On the Move

Some to Climb Yosemite's Half Dome, Others to Climb Their Personal 'Half Domes' in CSUN Fitness Program

Dozens of adventurous faculty, staff and community members on June 18 will make an ascent of Half Dome, Yosemite Valley's imposing monolith, as the culmination of a new Cal State Northridge fitness program's first year.

Though dozens more in the program may pass on the 17-mile, 12-hour high altitude hike, they already have begun the ascent of their own "Half Domes" through daily personalized exercise regimens.

All have signed on to "CSUN and You @ Half Dome," the brainchild of exercise physiologist Steven Loy. Supported by the Kinesiology Department in the College of Health and Human Development, Loy's project creates a lifelong program that helps its subscribers achieve reasonable goals for their health and wellness.

"Most people know the beauty of Half Dome only from the perspective of the valley's floor," said Loy, a Northridge alum. "But in our program, you can reach your own 'Half Dome' by continuing your exercise so that maybe some day, you'll be looking down on the Yosemite Valley. For some, their Half Dome can be as simple as being active for 30 minutes a day."

In October, Loy began to enlist individuals on and off campus who needed to lose from five to 100 pounds or more but who shunned health and fitness clubs or costly at-home

equipment, and/or who were under a doctor's orders to start exercising.

A cadre of kinesiology students is assisting Loy on the project, applying their learned skills and getting a new slant on alternative career paths. Assistance also has come from the Student Health Center and Professional Development Programs.

"Helping our faculty and staff become healthier and more productive lets us serve our students better," said Loy.

About 150 "Half-Domers" have responded thus far to Loy's call to arms. Many began with a "low-key" November 2004 one-mile walk around the Northridge campus and, weather permitting, have followed Loy's program of hikes at locales such as Sage Ranch and Sycamore Canyon Falls. They soon will tackle Boney Mountain Overlook and the Mt. Lowe Railway Loop, all building up to the "miles of stone stair steps" and the Vernal Falls Mist Trail that will greet them at Half Dome, whose peak towers some 8800 feet above sea level.

But the program is not all walk. Participants are offered an array of lectures on gear, exercises and nutrition for weight loss and strength. A detailed Half-Dome Web site, built by the Computer Science Department, is available at <http://kinesiology.csun.edu/HalfDome/HalfDome.htm>.

Connie Cafiero, an administrative



Photo by Lee Chiro

CSUN faculty, staff and friends set out on the first campus walk of the "CSUN & You @ Half Dome" exercise program, which will culminate in a Yosemite hike.

analyst/specialist in Admissions and Records, is sold on the program. "I'm recalling things I knew but had neglected to practice," said Cafiero, who finds her daily walk with colleagues "healthy and stress relieving."

A fall five years ago had to a degree sidelined Cafiero, who decided to "walk off" the pain. "I think fitness starts in the mind," she said, "and my thinking has been more positive since this program began."

Administrative support assistant

Sandy Struman (College of Arts, Media, and Communication) had never participated in a group fitness program. Seeking "a more consistent exercise ritual," she has engineered her own personal Half Dome program.

"I managed to manipulate my neighbor into walking with me after work," she said, in addition to following the workouts in a "Walk Away the Pounds" DVD she learned about at a Half Dome lecture.

Cafiero and Struman will be back in October 2005 for a new round of Half Dome, as will University Advancement publications director Randal Thomson and wife Patti, both of whom will test their mettle on the Half Dome trail in June.

The Thomsons initially thought Loy's goal of 90 minutes of daily walking seemed "ridiculous," but after giving up evening television and outfitting themselves with new hiking boots and individually calibrated pedometers, they now are rediscovering their community.

Just as importantly, Thomson said, "the walking program has forced us to get in touch with our current selves, not to live in denial, knowing we're not OK but assuming we'll get around to fixing it later. We're doing it now."

To join the program or for more information, contact Loy at steven.loy@csun.edu. ■

Endowment Is Professor's 'Thank You' to Colleagues

Engineering Professor Bonita Campbell's Initial \$25,000 Will Help Support Management Program



Photo by Lee Chiro

Campbell created the Bonita J. Campbell Engineering Management Endowment with an initial gift of \$25,000, to be supplemented with monthly paycheck deductions that will help the endowment offer even greater yields over time.

S.T. Mau, dean of the College of Engineering and Computer Science, lauded Campbell's generosity. "In addition to Dr. Campbell's long and distinguished service to CSUN, this is another example of her passion and dedication to a program she has created," he said.

Money from Campbell's endowment will help support student and graduate assistants as well as program-related expenses, such as guest lecturer fees.

A Northridge faculty member for nearly 30 years, Campbell spearheaded the creation of her three-year-old department in response to a demand for systems and production specialists to serve the many manufacturing production companies in the greater Los Angeles area.

The department's programs are the only ones of their kind in the area.

A number of former students, Campbell said, have gone on to successful careers in engineering management, "making a difference" in their fields. Over the years, many have returned to teach part-time at

CSUN for "modest" remuneration.

"They are so very enthusiastic and supportive of us," Campbell said.

"This endowment is a way of giving back to my students and my colleagues, who have given me so much joy over the years. I wanted to find some way

to say 'thank you,' and this is it."

For more information about the Campbell endowment, call Tammy Glenn, director of development for the College of Engineering and Computer Science, at (818) 677-6078 or e-mail her at tammyglenn@csun.edu. ■



Photo by Amy Snerzler

Whitney Scott (second from left), assistant professor in child and adolescent development, works with ninth graders from Valley New High School No. 1 during the College of Health and Human Development's recent Career Day. CSUN faculty helped teams of high school students explore careers in health sciences and human development.

Spring 2005 Academic Affairs Directory

Administrative Units	Extension	Fax	Contact	Room #	Mail Drop
Academic Affairs/Provost's Office http://www.csun.edu/academic.affairs					
Provost & V.P. for Academic Affairs	Dr. Harry Hellenbrand	2957	5530	Joseph Antunez/Leah Holzman	UN 220 8200
Vice Provost for Academic Affairs	Dr. Philip Handler	2957	5530	Jo Runnion (6424)	UN 220 8200
Assistant Provost	Prof. Jerry Luedders	2957	5530	Leah Holzman/Marlene Gale	UN 220 8200
Executive Administrative Assistant	Mr. Joseph Antunez	2957	5530		UN 220 8200
Confidential Administrative Assistant	Ms. Leah Holzman	2957	5530		UN 220 8200
Administrative Support Coordinator	Mr. Albert Alcázar	2957	5530		UN 220 8200
Administrative Support Assistant	Ms. Marlene Gale	2957	5530		UN 220 8200
Academic Resources & Planning http://www.csun.edu/~ar2170					
Assoc. V.P. for Academic Resources/CIO	Dr. Spero Bowman	5700	4933	Sabrina Rife	UN 260 8201
Dir. of Academic Resources	Ms. Diane Stephens	3735	4933	Jean Porter	UN 260 8201
Interim Dir. of Institutional Research	Ms. Barbara Hlinka	2125	5080	Sabrina Rife	UN 270 8224
Administrative Support Assistant	vacant	3735	4933		UN 270 8201
Administrative Analyst/Specialist	Ms. Jean Porter	3735	4933		UN 270 8201
Associate Budget Analyst	Ms. Editha Winterhalter	3735	4933		UN 270 8201
Accounting Technician III	Mr. Vincent Chavez	3735	4933		UN 270 8201
Room Reservation Coordinator	Ms. Leslie Gillman	3283	5018		UN 270 8224
Information Technology Consultant	Ms. Felicia Morariu	3277	5080		UN 270 8224
Research Technician-Institutional Research(IR)	Ms. Amita Naganand	3277	5080		UN 270 8224
Research Technician-IR	vacant	3277	5080		UN 270 8224
Information Technology Consultant-IR	Mr. Javier Hidalgo	3277	5080		UN 270 8224
Administrative Analyst-IR	Ms. Amy Matsubara	3277	5080		UN 270 8224
Administrative Analyst/Specialist-IR	Ms. Kimberly Harris-Phillips	3277	5080		UN 270 8224
Information Technology Consultant-IR	Mr. Ron Nguyen	3277	5080		UN 270 8224
Analyst/Programmer-IR	Mr. Joel Hickman	3277	5080		UN 270 8224
Research Asst.-IR/Teachers for a New Era (TNE)	Ms. Jeanie Mortensen	3277	5080		UN 270 8224
Educational Opportunity Program (Central Admin./Satellites) http://www.csun.edu/eop					
Director	Mr. José Luis Vargas	4151	4153	Jina González-Laguna	UN 205 8366
Director of EOP Admissions	Ms. Doris Johnson	2351	7728		SB 210 8205
Administrative Support	Ms. Chantay E. Brown	4151	4153		UN 205 8366
Program Resources	Ms. Lizbeth de la Cruz	4151	4153		UN 205 8366
Administrative Support Coordinator	Ms. Jina González-Laguna	4151	4153		UN 205 8366
Bridge Program Coordinator	Ms. Shiva Parsa	4151	4153		UN 205 8366
Data & Media Communication Specialist	Mr. Mesan Richardson	4151	4153		UN 205 8366
ADVISING RESOURCE CENTER/EOP					
Associate Director	Dr. Conchita Battle	2108	7728	Roxana Salinas	SB 210 8204
EOP Satellites are listed in each college					
Faculty Mentor Program Coordinator	Mr. Glenn Omatsu	4151	4153		UN 205 8366
Faculty Affairs http://www.csun.edu/~facacct					
Interim Assoc. V.P. for Faculty Affairs	Dr. Penelope R. Jennings	2962	5933	Irene Rivera	UN 225 8220
Mgr., Faculty Personnel and Comp. Progs.	Ms. Debbie Navarro	6729	5933		UN 225 8220
Assistant to the A.V.P.	Ms. Nancy Cichon	2962	5933		UN 225 8220
Personnel and Compensation Analyst	Mr. Ken Rappe	2962	5933		UN 225 8220
Confidential Administrative Assistant	Ms. Irene Rivera	2962	5933		UN 225 8220
Confidential Administrative Assistant	Ms. Rian Medlin	2962	5933		UN 225 8220
Director, CELT	Dr. Cynthia Desrochers	5934	5935		SH 437 8370
Administrative Office Support, CELT	Ms. Kelly Kroeker	6536	5935		SH 438 8370
Coordinator of New Faculty Programs	Dr. Christie Logan	2859	2663		MZ 342 8257
Faculty Senate http://www.csun.edu/senate					
Faculty President	Dr. Ronald McIntyre	3263	7174	Sandy Horwitz	FOB 106 8221
Analyst/Specialist	Ms. Sandy Horwitz	3263	7174		FOB 106 8221
Graduate Studies, Research & International Programs http://www.csun.edu/graduatestudies					
Assoc. V.P. for Graduate Studies, Research & International Programs	Dr. Mack Johnson	2138	4691	Gloria Roberts	UN 265 8222
Assoc. Dir. of Graduate Programs	Ms. Hedy Carpenter	2138	4691		UN 265 8222
Director of Research	Mr. Scott Perez	2901	4691		UN 265 8232
Coordinator of International Programs	Dr. Justine Su	2138	4691		UN 265 8222
Administrative Analyst	Ms. Gloria Roberts	2138	4691		UN 265 8222
Assistant Director of Research	Ms. Shirley Lang	2901	4691		UN 265 8232
Administrative Analyst	Ms. Karen Murdock	2901	4691		UN 265 8232
Graduate Evaluator	Ms. Rosemary Immordino	4800	4691		UN 265 8222
Graduate Evaluator	Ms. Jan Dee Vardaman	4800	4691		UN 265 8222
Compliance Officer	Ms. Suzanne Selken	2901	4691		UN 265 8232
Teachers for a New Era http://tne.csun.edu/index.html					
Project Director	Dr. Philip Handler	6424	6426	Jo Runnion	UN 275 8413
Project Manager	Dr. Steven Mercer	6424	6426		UN 275 8413
Administrative Support Coordinator	Ms. Jo Runnion	6424	6426		UN 275 8413
Undergraduate Studies http://www.csun.edu/~us6195					
Assoc. V.P. for Undergraduate Studies	Dr. Margaret Fieweger	2969	3977	Mary Ankeny	UN 215 8203
Dir. of Undergraduate Studies	Dr. Robert Danes	2969	3977	Shally Dhiman	UN 215 8203
Asst. to the Assoc. Vice President	Ms. Mary Ankeny	2969	3977		UN 215 8203
Asst. to the Director	Ms. Shally Dhiman	2969	3977		UN 215 8203
Catalog Editor	Mr. Greg Mena	2969	3977		UN 215 8203
Academic Services for Student Athletes	Ms. Mandie McConkey, Coordinator	4781	6590	Brett Sanders	SB 220 8391
Admissions & Records, Articulation	Mr. Eric Forbes, Director	3776	7676	Cheryl Charles	SB 170 8207
Assessment	Dr. Marilyn Filbeck, Coordinator	6533	5935	Donna Brooks	SH 433 8370
Developmental Mathematics	Dr. Michael Neubauer, Director	2231	3634	Lisa Anderson	SB 402 8358
Freshman Seminar	Dr. Cheryl Spector, Director	2969	3977	Shally Dhiman	UN 215 8203
General Education Honors Program	Dr. Robert Danes, Director	2969	3977	Greg Mena	UN 215 8203
Learning Resource Center	Ms. Sheryl Thompson, Director	2033	3632	Rashawn Green	SB 408 8325
Online Instruction	Mr. Randal Cummings, Coordinator	6558	5935	Donna Brooks	SH 441 8370
PACE	Ms. Patricia Grizzle, Acting Director	6562	5935	Donna Brooks	SH 443 8370
Program Review	Ms. Patty Faiman, Coordinator	2969	3977	Mary Ankeny	UN 215 8203
Service Learning	Ms. Julie Dercle, Coordinator	7395	5935	Donna Brooks	SH 435 8370
University Library http://library.csun.edu					
Dean	Dr. Susan C. Curzon	2271	2676	Mickey Martinez	OV 373 8326
Associate Dean	Ms. Susan E. Parker	2272	2676	Mickey Martinez	OV 373 8326
Manager of Academic Resources	Ms. Laura Clary	2205	4934	Grace Shojinaga	OV 373 8326
Systems Administrator	Mr. Eric Willis	4549	2676	Mickey Martinez	OV 373 8326
Director of Development	Ms. Cindy Ventuleth	2635	2676	Joyclyn Dunham	OV 373 8326
Reference & Instructional Services	Mr. Michael Barrett, Chair	2277	4136	Sally Brenneman	OV 102 8327
Technical Services	Ms. Doris Helfer, Chair	2261	4928	Sally Mendelsohn	OV 471 8328
College of Arts, Media, & Communication http://www.csun.edu/~amc1700					
Dean	Dr. William Toutant	2246	2345	Maralyn Parker	NH 211 8236
Associate Dean	Dr. Cynthia Rawitch	2247	2345	Gayle Wilson	NH 211 8236
Manager of Academic Resources	Mr. Arthur Evjen	2248	2345	Gayle Wilson	NH 211 8236
Director of Student Resource Center/EOP	Ms. Maria Valiton	2024	3863	Lea Clara	NH 135 8302
Director of Development	Ms. Gailya Brown	3320	2345	Sandy Struman	NH 211 8236
ART	Prof. David Moon	2242	3046	Jane McIntyre	AC 120 8300
CINEMA & TELEVISION ARTS	Dr. John Schultheiss	3192	4919	Mary Hendriks	MZ 195 8317
COMMUNICATION STUDIES	Dr. Peter Nwosu	2853	2663	Yolanda Avila	MZ 220 8257
JOURNALISM	Dr. Kent Kirkton	3135	3438	Vicki Morton	MZ 210 8311
MUSIC	Prof. Diane Roscetti	5871	3164	Sandy Browne	MU100 8314
THEATRE	Prof. James De Paul	3086	2080	Ann Burroughs	NH 110 8320
Entertainment Industry Institute	Dr. Robert Gustafson, Director	3432	2345	Sandy Struman	NH211 8236
KCSN	Mr. Frederick Johnson, Int. Gen. Man.	3090	3127		UPA 11 Rm 112 8312

Spring 2005 Academic Affairs Directory

Administrative Units		Extension	Fax	Contact	Room #	Mail Drop
College of Business & Economics http://www.csun.edu/busecon						
Dean	Dr. Fred Evans	2455	6324	Heidi Wolfbauer	BB 3105	8245
Interim Associate Dean	Dr. Earl Weiss	2466	6782	vacant	BB 3109	8245
Manager of Academic Resources	Ms. Laila Asgari	2831	6324	Marilyn Johnson	BB 3109	8245
Interim Dir. of Student Svcs. & Advise./EOP	Ms. Concepcion Perez	3537	5822	Rosalia Gomez	BB 2113	8382
Dir. of Dev. and Alumni Relations	Mr. Matthew Rinnert	3621	3188	Karen Ziegler	BB 3111	8381
ACCOUNTING & INFORMATION SYSTEMS	Dr. Janice Bell	2461	2456	Lisa McCulley-Frakes	BB 3123	8372
BUSINESS LAW	Dr. Kurt Saunders, Interim Chair	2905	6264	Trisha Willemse	BB 3121	8375
ECONOMICS	Dr. Shirley Svorny	2462	6264	Dorothy Moulton	BB 3121	8374
FINANCE, REAL ESTATE & INSURANCE	Dr. William Jennings	2459	6079	Janice Craig	BB 3125	8379
MANAGEMENT	Dr. Rex Mitchell	2457	6265	Cindy Trigg	BB 3119	8376
MARKETING	Dr. Judith Hennessey	2458	7669	Cindy Trigg	BB 3119	8377
SYSTEMS & OPERATIONS MANAGEMENT	Dr. Richard Gunther	2470	6079	Janice Craig	BB 3125	8378
Michael D. Eisner College of Education http://www.csun.edu/Education/						
Dean	Dr. Philip J. Rusche	2590	4000	Judi Daleke	ED 3121	8265
Assoc. Dean	Dr. Arlinda Eaton	2590	4000	Cheryl Atienza	ED 3121	8265
Manager of Academic Resources	Mr. Jerry Nader	3278	4000	Fred Moreno	ED 3121	8265
Dir. of Education Equity Office	Dr. Jinyi Li	3002	5722	Gloria Derge	E 101	8265
Dir. of Development & Alumni Relations	Ms. Laura Lindberg	2590	4000	Cheryl Atienza	ED 3121	8265
DEAF STUDIES	Dr. Lawrence Fleischer	5116	5717	Lynn Fanjeaud	ED 1107	8265
EDUC. LEADERSHIP & POLICY STUDIES	Dr. Richard Castallo	2591	5720	Jane Anderson	ED 1220	8265
EDUC. PSYCHOLOGY & COUNSELING	Dr. Rie Rogers Mitchell	2599	2544	Maria Boutin	ED 1218	8265
ELEMENTARY EDUCATION	Dr. Raymond Brie	2621	5723	Shanna Revoner	ED 1206	8265
SECONDARY EDUCATION	Dr. Bonnie Ericson	2580	2582	Nikki Pyles	ED 1208	8265
SPECIAL EDUCATION	Dr. Nancy Burstein	2596	4737	Liza Kraay	ED 1204	8265
Credential Office	Ms. Estela Chacon, Interim Director	2586	5722	Nita Mistry	E 103	8265
Center for Teaching and Learning	Dr. Michael Spagna, Endowed Chair	7494	2694	Marcia Rea	ED 1222	8265
College of Engineering & Computer Science http://www.csun.edu/~ecsdean						
Dean	Dr. S.T. Mau	4501	2140	Diana Field	EN 2404	8295
Associate Dean	Dr. J. Michael Kabo	2183	2140	Cindy Barrett	EN 2404	8295
Manager of Academic Resources	vacant	3435	2140	Daniel Vaughn	EN 2404E	8295
Dir. of Student Services Center/EOP	Dr. Karla Johnson-Majedi	2191	2026	Teresa Flammer	AD 710B	8295
Dir. of Development & Public Relations	Ms. Tammy Glenn	6078	2140	Carolina Franco-Ardaghi	EN 2410	8295
CIVIL ENGINEERING & APPLIED MECHANICS	Prof. Stephen Gadomski	2166	5810	Betsy Jones	EN 2407	8347
COMPUTER SCIENCE	Prof. Steven Stepanek	3398	7208	Sally Sawchuk	EN 2403	8281
ELECTRICAL & COMPUTER ENGINEERING	Dr. Nagi El Naga	2190	7062	Kathleen Pohl	EN 2409	8346
MANUFACTURING SYSTEMS ENGIN. & MGMT.	Dr. Bonita Campbell	2167	6427	Deborah Gibby	EA 1308	8332
MECHANICAL ENGINEERING	Dr. Sidney Schwartz	2187	7062	Diane MacLachlan	EN 2413	8348
Roland Tseng College of Extended Learning http://www.csun.edu/exl						
Dean	Ms. Joyce Feucht-Haviar	5005	5088	Pattie Ridenour	Bookstore 220	8365
Associate Dean	Mr. Robert Brocklehurst	7372	5088	Teri Crum	Bookstore 220	8365
Campus General Information		2504				
DISTANCE EDUCATION	Dr. Tyler Blake, Director	6406	6408	Karena Senchack	Bookstore 226	8401
ACADEMIC SUPPORT AND FINANCE	Mr. Michael Weaver, Director	7641	3819		Bookstore 221B	8218
PUBLIC RELATIONS, MARKETING AND COMMS.	Ms. Marcella Tyler, Exec. Dir.	3979	5088	Teri Crum	Bookstore 220	8365
College of Health & Human Development http://chhd.csun.edu						
Dean	Dr. Helen M. Castillo	3001	4024	Joy Bartley/Jean O'Sullivan	SQ 220	8215
Associate Dean	Dr. Harold Smith	3001	4024	Pat Tabidian	SQ 220	8215
Manager of Academic Resources	Ms. Cheryl Connole	3001	4024	Mari Uichanco/Jane Sindayen	SQ 220	8215
Dir. of Student Services Center/EOP	Dr. Mario Lopez	2883	5885	vacant	SQ 111	8294
Director of Development	vacant	5863	4024	vacant	SQ 220	8215
CHILD & ADOLESCENT DEVELOPMENT	Dr. Joyce Munsch	3385	2082	Karen Camargo-Ault	SQ 281	8263
COMMUNICATION DISORDERS & SCIENCES	Dr. J. Stephen Sinclair	2852	2632	Rechelle Aguayo	MH 301	8279
ENVIRONMENTAL & OCCUPATIONAL HEALTH	Dr. Peter Bellin	7476	7411	Donna Van Helsland	HC 2	8412
FAMILY AND CONSUMER SCIENCES	Dr. Alyce Akers	3051	4778	Sheila Brown	SQ 141	8308
HEALTH SCIENCES	Dr. Brian Malec	3101	2045	Vangi Bolton	EN 2206	8285
KINESIOLOGY	Dr. Carole Oglesby	3205	3207	Sue Young	KN 250	8287
LEISURE STUDIES & RECREATION	Dr. Craig Finney	3202	2695	Sue Young	KN 250	8269
PHYSICAL THERAPY	Dr. Janet Adams	2203	7411	Donna van Helsland	HG 9	8411
College of Humanities http://www.csun.edu/~humndean						
Dean	Dr. Elizabeth Say	3301	4902	Noreen Galvin	SH 461	8252
Interim Associate Dean	Dr. Gordon Nakagawa	3301	4902	Noreen Galvin	SH 461	8252
Manager of Academic Resources	Ms. Elizabeth Whirledge	3302	4902	Betti Prialux	SH 461	8252
Admin. Analyst/Specialist	Ms. Rita Linton	3302	4902	Tina Lee-Chewning	SH 461	8252
Director of Student Services Center/EOP	Ms. Shelly Thompson	4784	7475	Belita Hall	JR 240	8349
Director of Development	Mr. Steven Wallace	3301	4902	Tina Lee-Chewning	SH 461	8252
Grants Officer	Mr. Brad Shelton	3301	4902	Tina Lee-Chewning	SH 461	8252
ASIAN AMERICAN STUDIES	Dr. Teresa Williams-Leon	4966	7094	Janaki Bowerman	SH 103	8251
CHICANO/A STUDIES	Dr. Mary Pardo	2734	7578	Jennifer Wofford	JR 148	8246
ENGLISH	Dr. George Uba	3434	3872	Martha Alzamora	ST 704	8248
MODERN & CLASSICAL LANGUAGES & LITS.	Dr. Yolanda Rosas	3467	5797	Julie Todd	ST 408	8247
PHILOSOPHY	Dr. Gregory Velazco y Trianosky	2757	5687	vacant	ST 524	8253
RELIGIOUS STUDIES	Dr. Patrick Nichelson	3392	3985	Linda Jones	FOB 224	8316
WOMEN'S STUDIES	Dr. Marta Lopez-Garza	3110	7094	Janaki Bowerman	SH 103	8251
Liberal Studies Program	Dr. Elizabeth Adams, Interim Director	3300	4768	Bernadette Rugayan Bohn	E 100	8338
College of Science & Mathematics http://www.csun.edu/~hfsnm011						
Interim Dean	Dr. Fred Dorer	2004	2044	Shefali Desai	SC 2130	8238
Interim Associate Dean	Dr. Vicki Pedone	2005	2044	Karen Bilsky	SC 2130	8238
Manager of Academic Resources	Mr. Kavoo Blourtchi	2006	2044	Carlos Penea	SC 2130	8238
Dir. of Science & Math Student Svcs.Cntr./EOP	Ms. Frankline Augustin	4558	3877	Marine Lousparian	SC 2126	8408
Director of Development	vacant	2004	2044	John Pepitone	SC 2130	8238
BIOLOGY	Dr. Nancy Bishop	3356	2034	Linda Gharakhanian	SC 2102	8303
CHEMISTRY & BIOCHEMISTRY	Dr. Omar Zahir	3381	4068	Irene McGee	SC 1300	8262
GEOLOGICAL SCIENCES	Dr. Richard Squires	3541	2820	Mari Flores	SC 1202	8266
MATHEMATICS	Dr. Magnhild Lien	2721	3634	Julie Clement	FOB 114	8313
PHYSICS & ASTRONOMY	Dr. Julio Blanco	2775	3234	Donna Tornoe	SC 1128	8268
Genetic Counseling	Dr. Aida Metzberg	3611	2034	Glenda Neal	SC 2119	8409
College of Social & Behavioral Sciences http://csbs.csun.edu/csbs/html/index.html						
Dean	Dr. Stella Theodoulou	3317	3480	Dolores Jones	SH 401	8256
Interim Associate Dean	Dr. Brennis Lucero-Wagoner	3318	3480	Janice Olsen	SH 401	8256
Manager of Academic Resources	Ms. Pamela Simmons	2378	3480	Jeri Johnson	SH 401	8256
Dir. of Student Services Center/EOP	vacant	2658	5923	vacant	SH 208	8361
Director of Development	Ms. Anne Robison	7738	3480	Nadine Thomas	SH 401	8256
Grants Officer	Mr. Matthew Terhune	6135	3480	Nadine Thomas	SH 401	8256
ANTHROPOLOGY	Dr. Gregory Truex	3331	2873	vacant	SH 232	8244
GEOGRAPHY	Dr. Antonia Hussey	3532	2723	Sue Scott	SH 150	8249
HISTORY	Dr. Charles Macune	3566	3614	Kelly Winkleblack	ST 614	8250
PAN AFRICAN STUDIES	Dr. Tom Spencer-Walters	3311	4619	Andrea Fleming	FOB 221	8315
POLITICAL SCIENCE	Dr. Mehran Kamrava	3488	3502	Cynthia Harris	SH 210	8254
PSYCHOLOGY	Dr. Paul Skolnick	2827	2829	Leta Chow	SH 376	8255
SOCIOLOGY	Dr. Nathan Weinberg	3591	2059	Barbara Miyagawa	FOB 321	8318
URBAN STUDIES & PLANNING	Dr. Tim Dagodag	2904	5850	Chris Vogel	SH 208	8259

Please report any revisions to the Office of the Provost at ext. 2957. Refer to the Campus Directory for a more detailed version of each area. RED listings are new or changed.

FYI

Events

Wednesday, Feb. 2

Breakfast at CSUN Seminar
Patrick Nicholson (*Religious Studies*) will discuss ethical dilemmas facing managers in the workplace at a free seminar for business managers and executives titled "Ethics in Business and Industry," from 7:30-9 a.m. at the University Club. Sponsored by the Roland Tseng College of Extended Learning, the event is part of the Breakfast at CSUN series for professionals. *fmi*-Caroline Miranda, x4852.

Wednesday, Feb. 2

Wells Fargo Grand Opening
The grand opening of a Wells Fargo branch at CSUN will be celebrated at the bank's University Student Union site from 11 a.m. to 1 p.m. The event will feature a ribbon cutting ceremony, souvenir photographs in front of the Wells Fargo Stagecoach, free food, drinks and a raffle. *fmi*-Allyson Gerber, x6493.

Thursday, Feb. 3

Financial Education Seminar
The Teachers Insurance and Annuity Association-College Retirement Equities Fund (TIAA-CREF) will conduct a financial education seminar and one-on-one financial counseling sessions from 9 a.m. to 4 p.m. at the Sierra Center Conference Room, third floor. For an appointment with a TIAA-CREF consultant or to sign up for the seminar, visit www.tiaa-cref.org/moc.

Friday, Feb. 4

Nutrition Symposium
The Marilyn Magaram Center will present a scientific symposium for health care professionals titled "Overweight and Metabolic Syndrome: Strategies, Prevention and Treatment" from 8:30 a.m. to 2:30 p.m. at Brandview Collection, 109 East Harvard St., Glendale. Registration fee: \$60 professional, \$25 student. *fmi*-Marilyn Magaram Center, x3102.

Monday, Feb. 14 and Tuesday, Feb. 15

CELT Faculty Book Groups
Faculty are invited to join a Center for Excellence in Learning and Teaching's book group. Michael Neubauer (*Mathematics*) will facilitate "Thinking about Teaching and Learning: Developing Habits of Learning with First Year College and University Students" on Mondays starting on February 14, and Amir Hussain (*Religious Studies*) will facilitate "Making the Most of College" on Tuesdays starting on February 15. The groups will meet four times during spring 2005, from 2:15-3:15 p.m. in Sierra Hall 439. Registration is limited to 10 participants. *fmi*-x6536 or kelly.kroeker@csun.edu.

Public Meetings

USU Board

Meets 1 p.m.
Mon., Jan. 31
USU Grand Salon

For Your Information publishes announcements of events, public meetings, notices, classes and deadlines. Submission deadline is noon on Monday, one week before the next issue.

The deadline for the February 14 issue is Monday, February 7. We strive to include all items submitted by deadline occurring until the next issue. Submit future items by e-mailing them to

pubinfo@csun.edu, sending them to mail drop 8242 or faxing them to (818) 677-4909. E-mail is the preferred method of submitting.

Note: *fmi* means for more information. ■

University Planning and Budget Group

Meets 1-3 p.m.
Mon., Jan. 31
University Hall 277

Personnel Planning and Review Committee

Meets 1:15-5 p.m.
Wed., Feb. 2 and 16
University Hall 277

Educational Policies Committee

Meets 2-4 p.m.
Wed., Feb. 2 and 16
University Hall 211

Senate Executive Committee

Meets 1-4:30 p.m.
Thu., Feb. 3
University Hall 277

Academic Technology Committee

Meets 2-4 p.m.
Fri., Feb. 4
University Hall 211

Educational Resources Committee

Meets 2-4 p.m.
Tue., Feb. 8
University Hall 211

Notices

Our Deepest Sympathies

The university and the English Department extend deepest condolences to the family and friends of Gale Larson, professor of English and former coordinator of the Writing Proficiency Exam program, who passed away on January 4. Larson, who joined the Cal State Northridge faculty in 1967, served as English Department chair from 1985 to 1991. A nationally recognized scholar in drama studies, particularly the work of George Bernard Shaw, Larson also was a national leader in Advanced Placement testing and test design.

Donations to a scholarship fund honoring Larson's memory and service to Northridge may be made out to "CSUN Foundation for the Gale Larson Scholarship" and sent either to the English Department or to the College of Humanities.

Campus Condolences

The Cal State Northridge campus community and the College of Engineering and Computer Science offer deepest sympathy to Mechanical Engineering Department chair Sidney Schwartz, as well as to his family and friends, on the loss of the chair's former wife, Natalie Schwartz, who passed away on January 8.

Examinations and Religious Observances

Provost and Vice President for Academic Affairs Harry Hellenbrand reminds faculty members that university policy requires them to accommodate students when examinations conflict with religious observances. The provost urges faculty to refrain from scheduling

exams on days likely to affect many students' observances. For help in evaluating requests to re-schedule exams for such purposes, call the Office of Faculty Affairs, x2962.

Catastrophic Leave Donation

Karen Berkeland (*University Library*) is currently out on a medical leave of absence. She has exhausted her leave credits and is requesting catastrophic leave donations on her behalf. The catastrophic leave donation form may be accessed at www-admn.csun.edu/brs/forms/benefitsforms.html. To make a donation of sick leave and/or vacation leave, forward completed forms to Renee Venezia, manager, Payroll Administration, mail code 8228.

Roland Tseng College Spring Programs

The Roland Tseng College of Extended Learning will offer advanced professional development programs on evenings and weekends this spring. Certificate programs include crime and intelligence analysis, digital media and design, fundraising and institutional advancement, human resources management, interpretation and translation, landscape design and production and inventory control. Also offered: conversational Spanish courses, test preparation classes and a master of public administration program. Class schedules are available at the Matador Bookstore Complex, Rm. 100, or online at <http://tsengcollege.csun.edu>. *fmi*-Tseng College, x2504

Department Chairs Appointed

Provost and Vice President for Academic Affairs Harry Hellenbrand has appointed Larry Allen (*Biology*) and reappointed Stephen Gadowski (*Civil Engineering and Applied Mechanics*), Steven Stepanek (*Computer Science*) and Brian Malec (*Health Sciences*) as chairs of their respective departments. Their three-year terms will be effective on August 24.

Sabbatical Leaves Announced

President Jolene Koester is pleased to announce the awarding of the following 42 regular sabbatical leaves and 7 difference-in-pay leaves to be taken during the 2005-06 academic year:

College	Yrs. of Credit
College of Arts, Media, and Communication	
Abeles, Kim	7
Kramer, Temma	3
Krasilovsky, Alexis	3
Leach, Joel	6
Portnoy, Ken	6
Smith, Paul	10
College of Business and Economics	
Behnezhad, Ali	9
Bleich, Donald	6
Dechter, Avi	8
Dommeyer, Curt	7
Halcoussis, Dennis	6
Lee, Tom	17
Sangeladji, Mohamad	10
Saunders, Kurt	7
Zhou, Zhong-gou	7
College of Education	
Chong, Sandra	8.5
Jackson, Greg	16
Mitchell, Rie	9

College of Engineering and Computer Science	
Dijulio, Shoeleh	6
College of Health and Human Development	
Abourezk, Tami	6
Akers, Alyce	10
Bellin, Peter	15
Martin, Allen	8
Romack, Jennifer	10
Rubino, Louis	6
Slechta, Anita	10
College of Humanities	
Barresi, Dorothy	6
Kroll, Barbara	6
Lam-Easton, Linda	7
McClave, Evelyn	6
Nieto, Eva	8
Paller, Bonnie	7
Rodewald, Richard	13
Rodriguez, David	14
College of Science and Mathematics	
Dudgeon, Steve	6.5
Jacobs, Don	6
Marchisotto, Elena	12
Marsaglia, Kathleen	6
Watkins, Bill	6
College of Social and Behavioral Sciences	
Auerbach, Jeffrey	6
Brummett, Patricia	11
Davis, Ron	9
Gilman, Antonio	3
Lopez, Henry	30
Mitchell, James	3
Orme, Amalie	16
Scott, Johnnie	21
Shaw, Victor	8
Library	
Reagan, Michael	6

Bold—truly outstanding and exceptional
Standard—meritorious
Italic—Difference-in-pay leave

Classes

ITR Faculty/Staff Training

Information Technology Resources (ITR) provides free training workshops for CSUN faculty and staff on the garden level of the Oviatt Library, in the Windows lab unless otherwise noted:

MS Publisher Software for Publishing and Distribution
Mon., Jan. 31, 2-4 p.m. OV 30

MS Access
Tue., Feb. 15, 2-4 p.m. OV 33

Professional Development Staff Training

Professional Development Programs provides free training workshops for CSUN staff members, on the garden level of the Oviatt Library unless otherwise noted. To enroll, e-mail melissa.billeter@csun.edu. Include name, department, extension, e-mail address, class name and date. All training enrollments should be discussed with management. *fmi*-Melissa Billeter, x3820, or visit www-admn.csun.edu/brs/training/index.html.
Workshops:

Smoking Cessations: Starting the Year by Making the Choice to be Healthier
Thu., Feb. 3, noon-1 p.m. OV 16

New Hire Orientation
Wed., Feb. 9, 8:30-11:30 a.m. OV 16

News Briefs



Julie Dercle Named to Historic Preservation Commission in Pasadena

Julie Dercle, assistant professor in the Urban Studies and Planning Department, has been appointed to Pasadena's Historic Preservation Commission. Her term on the commission will expire on June 30, 2007.

Dercle represents about 1,000 households in Bungalow Heaven, Pasadena's first landmark historic district, where she serves as vice president of the Bungalow Heaven Neighborhood Association's board of directors.

At CSUN, Dercle specializes in urban design and planning practice, and serves as faculty advisor for the Urban Studies and Planning Association of Students. She also is coordinator of CSUN's Center for Community Service-Learning.

The new commissioner is a member of the American Institute of Certified Planners.

Women's Basketball Hosts Free Game Night for Kids

All children under the age of 14 years—and accompanied by a paying adult—will be admitted free of charge to the CSUN women's basketball

game against the University of Idaho, set for 7 p.m. Saturday, Feb. 12 in the Matadome.

A host of fun and educational pre-game activities for the youngsters will begin at 4:45 p.m., including a free throw contest, taking photos with the Matador mascot, a basketball dribbling station, "jump rope for joy," a sign making station and information about healthy eating for youths.

The CSUN Intercollegiate Athletics Department's "Take a Kid to the Game" event also will recognize National Girls and Women in Sports Day.

"Our department and its athletes wish to reach out and give back to Northridge and the surrounding communities," said Brezya Rhodes, the athletics department's assistant marketing and promotions coordinator.

Children attending the event, designed to encourage adults to bring elementary and middle school youngsters to collegiate basketball games, will be treated to free T-shirts. They also will be invited to participate in a post-game autograph session with the Matador women's basketball team.

For more information, call Rhodes at (818) 677-2683.

New East-West Roadway in Works for Campus

A new campus roadway linking Lindley Avenue with Bertrand Street will meet several of Cal State Northridge's longstanding needs, among them the provision of additional disabled parking spaces and short-term metered parking.

Facilities Planning, Design and Construction Director Colin Donahue said the new east-west roadway will implement an important goal of the 1998 campus master plan: the provision of convenient access from Lindley Avenue—just north of the information booth—to the G3 and G4 parking

lots on the campus' eastern edge.

The roadway, which began construction in late November 2004, will feature 39 diagonal parking spaces west of Chisolm Hall and north of the Orange Grove.

Of those spaces, Donahue said, five will be designated for disabled users and conveniently located near the Matador Bookstore and the Science buildings complex. Nine will be for short-term metered parking, to be located adjacent to the bookstore for the convenience of store patrons.

Construction began in late November 2004, with completion

expected in March 2005. The seven existing parking spaces south of Chisolm Hall have been temporarily closed to accommodate work on the project.

Donahue said roadway construction will impact neither the campus' orange grove nor the stand of cedar trees on the grove's northern edge.

To see a plan view of the project, visit the Facilities Planning, Design and Construction Web site at www.admn.csun.edu/facplan/. For more information about the project, call Facilities Planning at (818) 677-2561.



Communication studies senior Jaclyn Tarrin reads a story to youngsters at the Napa Street site of Head Start in Northridge, as part of CSUN's annual "Cuddle N' Read Drive" sponsored by the University Ambassadors and President Jolene Koester. Ambassadors like Tarrin distributed new children's books and toys to three Head Start sites over the holidays.

Photo by Amy Smetzer

FYI...

Understanding Style Preferences
Tue., Feb. 15, 9–11:00 a.m. OV 16

More Strength—How's It Going?
(CSUN & You @ Half Dome)
Thu., Feb. 17, 11:30 a.m. to 12:30 p.m.
OV 16

Deadlines

Deadline for FERP Applications

Article 29.2 of the Collective Bargaining Agreement stipulates that applications for the Faculty Early Retirement Program (FERP) should be submitted at least six months prior to the beginning of the academic year in which FERP participation is planned. Deadline for this year's applications: February 24. Pick up forms from the Office of Faculty Affairs, University Hall 225, mail code 8220. Completed forms, including signatures of the faculty member, the chair and the dean, should be submitted to that same office. *fmi*—Penelope Jennings, x2962.

Research, Scholarship, Creative Activity Awards

The Research and Grants Committee announces the 2005–06 Competition for Research, Scholarship and Creative Activity Awards, providing up to \$5,000 for pursuit of scholarly and creative interests. Faculty may apply for three units of released time and/or funds for project expenses. Application deadline: 5 p.m. Mon., February 28. Application materials are available in college and department offices, or in Research and Sponsored Projects, University Hall 265. Download the application from www.csun.edu/research/1Research/Competition.htm. *fmi*—Shirley Lang, x2901

Beck Grant Information and Application

Judge Julian Beck Grant information and applications can now be accessed on the CELT Web site at www.csun.edu/~celtact/grant.html. The proposal due date is Mon., March 14. Beck grants will award Learning-Centered Instructional Project proposals exclusively. Teams

are encouraged to apply for stipend awards (versus released time). Stipends will be awarded up to \$5,000 per project (\$2,500 per person), to be divided among project participants. Two CELT workshops are planned to help with project development: Tue., Feb. 22 from 12:30–2 p.m. and Mon., Feb. 28, from noon–1:30 p.m. *fmi*—Kelly Kroeker, x6536

China Scholarship Council Award

Undergraduate and graduate students may apply for up to two awards from the China Scholarship Council, supporting study in China for academic year 2005–06, covering all tuition and living expenses. Word file proposals should include no more than three double-spaced pages along with a single page résumé and two letters of recommendation from current instructors. Submit all materials to Justine Su, China Institute director, no later than March 1. *fmi*—Justine Su, x2138 or zsu@csun.edu.

China Institute Faculty Grants

CSUN faculty interested in China can obtain initial seed money from the China Institute for projects or study advancing the field of China studies. Up to two grants of \$1,000 each will be awarded. Word file proposals of no more than three double-spaced pages, along with a one-page résumé, should be submitted to Justine Su, China Institute director, no later than March 1. *fmi*—Justine Su, x2138 or zsu@csun.edu.

Human Subjects Research Approval

Faculty and students performing research with human subjects must complete a Human Subjects Protocol Approval form. Original forms and nine copies must be submitted to the Research Office for review by the Standing Advisory Committee for the Protection of Human Subjects. Next meeting: Tue., Feb. 8. Next deadline: Tue., Feb. 22. Protocol submission forms are in the Office of Research and Sponsored Projects., University Hall 265, or download from www.csun.edu/research. *fmi*—x2901.

■ ■ ■

Northridge Singers Invited to Major Choral Convention

Choral Directors Welcome Choir Back for Cathedral, Immanuel Presbyterian Concerts

An invitation to perform during the convention of the American Choral Directors Association (ACDA), the nation's most prestigious choral music organization, is a signal honor. A second invitation is a special tribute for the Northridge Singers, whose 2002 convention performance earned standing ovations.

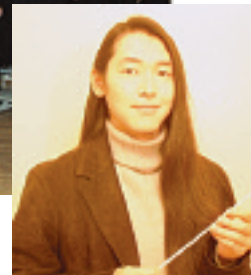
The university's acclaimed choral group will sing at both the new downtown cathedral and at Immanuel Presbyterian Church during the ACDA's February national convention in Los Angeles, this year expected to attract up to 10,000 conductors and associates.

Two Northridge Singers performances are planned for Immanuel Presbyterian Church on Wilshire Boulevard, at 9:30 a.m. on February 4, and at 9:45 a.m. the following day. A 2:15 p.m. concert appearance is set for Friday, Feb. 4, at the Cathedral of Our Lady of the Angels. All performances will be open to the public; schedules are subject to change by convention officials. Public tickets are \$25.

Pre-concert ceremonies will salute the work of choir member Kentaro Sato, recipient of the association's highest honor—the Raymond Brock



Northridge Singers will perform at the national convention of the American Choral Directors Association (ACDA) in February. Student composer Kentaro Sato (right) will accept the ACDA's choral competition award.



Choral Competition Award—for his "Kyrie," a composition of sacred music for a cappella voices.

The "Kyrie" will be included in the Northridge Singers' program, which also will feature a wedding chant by High Renaissance composer Tomás Luis de Victoria; a work by Latvian composer Vilnis Smidbergs; Brahms' *Abendstandchen*; Los Angeles-based Kenneth Neufeld's "Songs from Twelfth

Night," and a Ukrainian folk song by Nicolas Rakov.

A media composition major, Sato became a member of the choral group two years ago. "The piece requires at least eight voices, and the Northridge Singers are 50 voices strong," he said. "This will give it more power and warmth."

Music Department chair Diane Roscetti said Sato's award "graphically

demonstrates what is possible when talent, discipline and enterprise combine to achieve the highest level of possibility."

Departmental support and guidance for Sato—"Ken-P" to his friends—came from Elizabeth Sellers, director of the Music Department's media composition program, music professor Katherine Baker and Northridge Singers director Paul Smith, who said Sato's composition "uses close harmonies and creates an abundance of tonal effects."

It was Smith and the Northridge Singers, Sato said, who inspired him to write choral music. "The choral world is new for me," he noted. Sato's reward came the first time he heard his "Kyrie" in full voice. "Before that, it was like everything was just notes, all in my head," he recalled. "When it went from paper to voice, it was like a part of my heart came alive."

For more information on the Northridge Singers' performances at the ACDA convention, call the Music Department Choral Office at (818) 677-3171. ■

Calendar

The A.S. Ticket Office in Nordhoff Hall sells tickets to many events on campus, except for some held by outside groups. The Ticket Office is open from 10 a.m.–6 p.m. Mon.–Fri. For prices not given, call (818) 677-2488.

Art and Exhibits

For gallery info, call (818) 677-2156. Main gallery hours: Mon. through Sat. 12–4 p.m. Admission is free unless specified. For library exhibits, call (818) 677-2285.



▲ African Arts in the Life Cycle

Sculptures, paintings, photographs, personal arts and textiles reflecting the extraordinary range of expression in African art will be displayed. Curator: CSUN art professor Peri Klemm.

Runs through Sat., April 9.

Reception: Fri., Feb. 4, 7–9 p.m.

Gallery lecture: Mon., Feb. 7, 9 a.m. Exhibit will be closed Thu., March 31, for Cesar Chavez Day.

Cal State Northridge Art Galleries



▲ Remote Roads

CSUN history professor James Sefton's striking photographs of remote American farms, roads, towns and villages are exhibited. Runs through Wed. Feb. 9. Reception: Fri., Feb. 4, 7–9 p.m. Cal State Northridge Art Galleries

Bianchi Planetarium

"Winter Sky Show" and "When the Pacific Speaks, the World Listens" Fri., Feb. 4, 6:30 p.m.

"Winter Sky Show" and "The Moon: Our Nearest Neighbor in Space" Fri., Feb. 11, 6:30 p.m.

For ticket info, (818) 677-2488 or visit www.csun.edu/physics/planetarium.

Athletics (home games):

Men's Baseball

2/11 UCLA 2 p.m.
2/13 UCLA 1 p.m.

Men's Basketball

2/3 Long Beach State 7:05 p.m.
2/5 UC Irvine 7:05 p.m.
2/16 Cal Poly 7:05 p.m.

Men's Swimming

2/4 UC Irvine 2 p.m.

Track and Field

2/5 All Comers 8:30 a.m.

Men's Volleyball

2/2 UCLA 7 p.m.
2/4 UC Irvine 7 p.m.
2/9 Hope International 7 p.m.

Women's Basketball

1/31 UC Davis 7 p.m.
2/10 Utah State 7 p.m.
2/12 Idaho 7 p.m.

Women's Swimming

2/4 UC Irvine 2 p.m.

Women's Tennis

2/9 Fullerton 1:30 p.m.
2/15 UC Irvine 1:30 p.m.

Women's Water Polo

2/5 USC 10:30 a.m.
2/5 San Bernardino 3 p.m.

Cinematheque

Screenings are free and take place in the Alan and Elaine Armer Theater, on the first floor of Manzanita Hall at the southwest corner of campus. The theme of the film screenings for spring 2005 is "Screenwriting." For more info, call (818) 677-3193 or see www.csuncinematheque.com.

"Menace II Society"

Directed by Albert and Allen Hughes. Kicks off Hollywood in Black and White series. Screenwriter/director Allen Hughes, guest lecturer. Mon., Feb. 7, 7 p.m.

"Dead Presidents"

Directed by Albert and Allen Hughes. Part of the Hollywood in Black and White series. Screenwriter/director Allen Hughes, guest lecturer. Mon., Feb. 14, 7 p.m.

Music

Admission to all music events (unless otherwise specified): \$10 general, \$7 faculty, staff and seniors, \$5 students.

Faculty Artist Series

Featuring Julia Heinen, clarinetist and guest Shari Raynor, pianist. Wed., Feb. 2, 8 p.m. Music Recital Hall

Northridge Singers

Conducted by Paul Smith. American Choral Directors Assoc. Convention invited performances. Fri., Feb. 4, 9:30 a.m. and Sat., Feb. 5, 9:45 a.m. Immanuel Presbyterian Church 3300 Wilshire Blvd., Los Angeles Fri., Feb. 4, 2:15 p.m. Cathedral of Our Lady of the Angels 555 West Temple St., Los Angeles For more info: (818) 677-3171 \$25

Classical Music Ensemble

Featuring Diane Ketchie, soprano and pianist, and John Roscigno, percussionist and pianist. Music Recital Hall Sat., Feb. 5, 8 p.m.

Master Class

William Bennett, oboist. Sun., Feb. 13, 1 p.m. Music Recital Hall

William Bennett

Oboe Recital Sun., Feb. 13, 8 p.m. Music Recital Hall

Jazz Faculty Recital

Wed., Feb. 16, 8 p.m. Music Recital Hall

Theater/Performance

"Stand By Your Man: The Tammy Wynette Story"

Directed by Michael Licata. Sat., Feb. 5, 8 p.m. Performing Arts Center \$30–\$45

"Yaneura (Attic)"

Performed by the Rinko-Gun Theater Company of Japan. Coordinated by theatre professor Kevin Wetmore. Wed., Feb. 16, 8 p.m. Thu., Feb. 17, 8 p.m. CSUN Little Theatre

@CSUN

is published biweekly during the academic year for the university community of California State University, Northridge. Copies are available without charge and on request. Direct inquiries, comments, and suggestions to Managing Editor, Public Relations and Strategic Communications, 18111 Nordhoff St., Northridge, CA 91330-8242.

voice (818) 677-2130 / fax (818) 677-4909
e-mail pubinfo@csun.edu
Web site: www.csun.edu/~hfoao102/@csun.edu

Jolene Koester, *President*
Judy C. Knudson, *V.P. for University Advancement*
John Chandler, *Director, Public Relations and Strategic Communications*

Editorial Team
Brenda Roberts, *Managing Editor*
Carmen Ramos Chandler, *Director of News and Information*
Lee Choo, *Photographer*
Tatsuo Kumagai, *Graphic Designer*
Ken Swisher, *Director of Marketing Communications*
Randal Scot Thomson, *Director of Publications*
Mitzye Ramos, *Student Assistant*
Antoinette Griffith, *Student Assistant*

